

BNSFSM
RAILWAY

MUSKOGEE MEDICAL
CENTER AUTHORITY



ARVEST[®]
BANK

HEALTH Center
& WELLNESS

NeoHealth
NORTH-EASTERN OKLAHOMA
COMMUNITY HEALTH CENTERS, INC.

OGHE[®]

Saint Francis
Health System

THE ROXY THEATER
PRESENTS



Oklahoma Movie Hall of Fame
Induction Ceremony





RICKI G. MASLAR

Ricki G. Maslar grew up in Oklahoma City. At age ten, she began working as a model in local runway, print & commercials with dreams of becoming an actress. She went on to attend St. Gregory's College in Shawnee, OK. She married out of college and became involved in the local entertainment community. Maslar was active in bringing filming to Oklahoma. She made strong connections to Hollywood and it was casting directors [Janet Hirshenson](#) and [Mary Jo Slater](#), who encouraged her to move to Los Angeles to continue her career in entertainment. A prominent executive, casting director and producer with over 35 years of experience in the entertainment industry, she has been a casting director for over 200 studio and independent films. Her credits include [Twister](#), [The Tuskegee Airmen](#), [Brother to Brother](#), [The Line](#), [A Golden Christmas](#), [Dahmer](#) (2002), "Chance", "The Painted Woman",

"The Bronx Bull", "Under the Bed" and "Christmas in the Heartland." A member of the Producers Guild of America (PGA) as well as the Casting Society of America (CSA), she has been nominated by the Talent Managers Association (TMA) four times as Feature Film Casting Director of the Year. She has the reputation of being an actor-friendly casting director and is a valued partner to both directors and producers.



DOUGLAS CLAYBOURNE

An ex-Marine and Vietnam Veteran, Wayne Douglas "Doug" Claybourne was raised in Tulsa Oklahoma. After graduation from the University of Tulsa Doug began his post graduate study at the Art Center College of Design in Los Angeles where he met Francis Ford Coppola who influenced him to become involved in film production. That "influencing" lead Doug to volunteer for an 8 weeks stint on Coppola's production APOCALYPSE NOW. That "stint" turned into a three and a half years commitment that took him from volunteer to asst. director & post production supervisor.

Under Coppola's mentorship Claybourne developed into a successful Hollywood producer and executive producer of more than twenty major motion picture productions w/ some of the industry's most bankable stars. From the Mark of Zorro to Nights in Rodanthe, Claybourne has not only

developed a name for himself as a capable producer, but has also developed his own major production company POETRY AND PICTURES INC. The perfect company name for a man who has written five books of published poems and who continues to develop new productions with the artistic vision of a master.

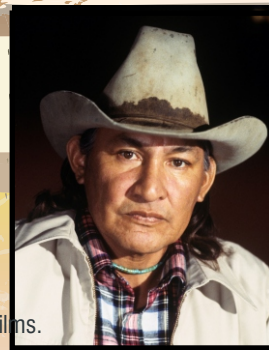


JULIANNA BRANNUM

Induction Sponsored by Muskogee Tourism

This great-great granddaughter of Quanah Parker has been described as the "female version of Ken Burns". Born and raised in Norman Oklahoma Julianna grew up in a family that had a clear understanding of their Comanche Heritage and how important it was. Her father, an avid lover of music and movies influenced her appreciation for both. That, plus her love of art and history inspired her to acquire a degree in journalism from the University of Oklahoma with a focus to become a documentary filmmaker. From the very beginning she wanted to tell stories about her tribe and the larger Native experience, history and culture. Her first film, THE CREEK RUNS RED, was selected to air on PBS National Primetime series INDEPENDENT LENS. That same year Brannum was selected as a Sundance Institute/Ford Foundation Fellow. The following year she joined Emmy Award Winning Producer Stanley

Nelson to co-produce the five parts feature documentary series WE SHALL REMAIN. In 2008 Brannum was awarded a fellowship from the Rockefeller Foundation and the Tribeca Film Institute in support of her documentary LA DONNA HARRIS INDIAN T01. She has also produced programs for the Discovery Channel, A&E and BRAVO. She is a member of the Quahada band of the Comanche Nation of Oklahoma.



WILL SAMPSON

Induction Sponsored by BNSF Railroad

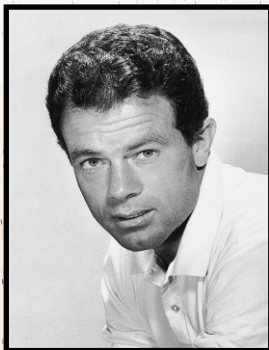
Will Sampson Jr. was born September 27 1933 in Okmulgee County Oklahoma. A free spirited Muskogee Creek Indian, Sampson spent twenty years on the rodeo circuit. He competed in numerous categories but his specialty was bronc riding. When the producers of ONE FLEW OVER THE CUCKOO'S NEST were looking for a Native actor to play one of the key supporting roles in the movie rodeo announcer Mel Lambert suggested the six foot seven inch Will Sampson. On the strength of a single interview Sampson was hired for the role even though he had no professional training as an actor. His performance alongside Hollywood super star Jack Nicholson, veteran actors Louise Fletcher, Sydney Lassick, William Redfield, Christopher Lloyd, Brad Dourif and Danny Devito was formidable. The movie won five Academy Awards and is ranked as number 33 of the top 100 movies of all time. In less than 11 years Sampson appeared in more than 70 films and television shows. His performance as CrazyHorse in the Charles Bronson western White Buffalo has been called "stunningly powerful". The actor, who was also a respected artist, died June 3rd 1987 from post operative kidney failure.



DINO LALLI

Dino Lalli was born and raised in McAlester. He is an Emmy-nominated journalist/producer, President of Clever Name Productions LLC, and currently co-host of Discover Oklahoma. Over a 20-year period, Dino served as the award-winning entertainment editor and film critic for three television stations: KOCO and KFOR in Oklahoma City as well as KNBC in Burbank, California. While at KOCO, he hosted and produced an Emmy nominated, nationally syndicated program on movies. He is one of just a handful of entertainment reporters in the country ever to be nominated for an Emmy. Much of Dino's work has aired nationally on various ABC affiliates, The Today Show, CNN

Showbiz Tonight, ESPN, and Entertainment Tonight. Dino received his Bachelor of Arts Degree in Journalism Radio/TV Broadcasting from the University of Oklahoma. He's a member of the national Broadcast Film Critics Association as well as the Oklahoma Film Critics. Prior to working for Discover Oklahoma, Dino worked in the Oklahoma Film and Music Office for almost nine years.



JACK GING

Born in Alva Oklahoma Jack Lee Ging had an acting career that spanned more than thirty years and over 150 appearances in movies and on television. Remembered for his portrayal as General Harlan "Bull" Fulbright in NBC Television's hit series THE A-TEAM, Ging played a full roster of heroes and villains over his career. A graduate of the University Of Oklahoma, the physical Ging ran for five touchdowns as a player for the legendary football coach Bud Wilkinson, and spent four years as a marine before beginning his acting career.

WHERE THE RED FERN GROWS

WHERE THE RED FERN GROWS is a 1974 film directed by Norman Tokar, starring James Whitmore, Beverly Garland, Stewart Peterson and Oklahoma born actor Jack Ging. The movie is based on the popular 1961 novel of the same name written by Wilson Rawls. The story is about a young boy, the hunting dogs he loves and his relationship with his grandfather. The heartwarming family film was so well received that it has inspired two remakes and a sequel. While James Whitmore created one of the most memorable grandfather characters in "moviedom", one of the small budget movie production's great benefits was to have Deah Cundey as cinematographer.